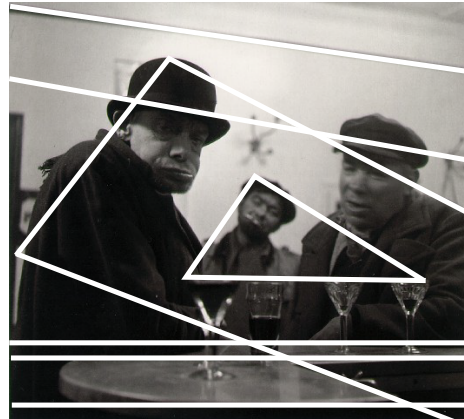


# Photo Analysis Worksheet Visual Analysis

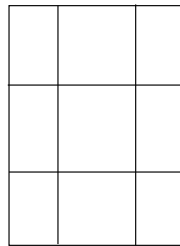
Look at the selected photograph and determine whether it fits into any of these three formal constructions. Draw in the major axis of the photo, including the horizon and any dominant lines or shapes. Think about how the construction of the composition influences the reading of the image.



Robert Doisneau *Coco, Paris* (1952)

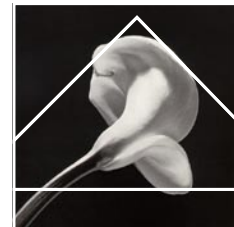
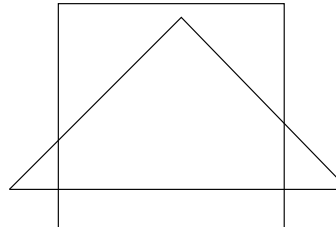


## Rule of Thirds



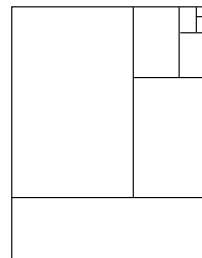
Harry Callahan *Eleanor, Chicago* (1947)

## Triangular Balance



Robert Mapplethorpe *Calla Lily* (1984)

## Golden Rectangle/ Divine Proportion



Imogene Cunningham *Stapelia* (1928)

## Photographer of the Week

Download the reading at <http://classes.ninabellisio.com/GD1125.php> and answer the following questions.

Place of Birth:

Primary Location:

Category: Portraiture

Summary of the reading:



Diane Arbus (1923-1971)

### **In-class Shooting Assignment** (this is NOT homework)

With the work of Diane Arbus in mind, select someone to shoot a portrait of. Think about both the person and the background. Shoot in black and white or convert to black and white. Crop image to a square to emulate her film type. Best 2-3 frames.

## Visual Analysis

Draw in the prominent geometric structures in the photos below.



Select one and describe why it is a famous photograph. How does this image represent the overall style and subject matter of the photographer?

## Photographer of the Week

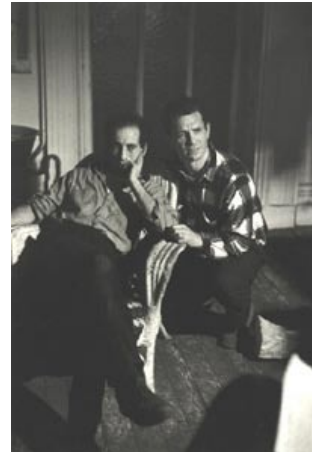
Download the reading at <http://classes.ninabellisio.com/GD1125.php> and answer the following questions.

Place of Birth:

Primary Location:

Category: Street Photography

Summary of the reading:



Robert Frank  
(1924- )

### **In-class Shooting Assignment** (this is NOT homework)

Look at the people and environment of our neighborhood. Create an image that captures something beyond that space. Think about San Francisco as a metaphor for the entire country. Use aperture and shutter speed to control the scene. Shoot in black and white or convert to black and white. Best 2-3 frames.

## Visual Analysis

Draw in the prominent geometric structures in the photos below.



Select one and describe why it is a famous photograph. How does this image represent the overall style and subject matter of the photographer?

## Photographer of the Week

Download the reading at <http://classes.ninabellisio.com/GD1125.php> and answer the following questions.

Place of Birth:

Primary Location:

Category: Still Life

Summary of the reading:



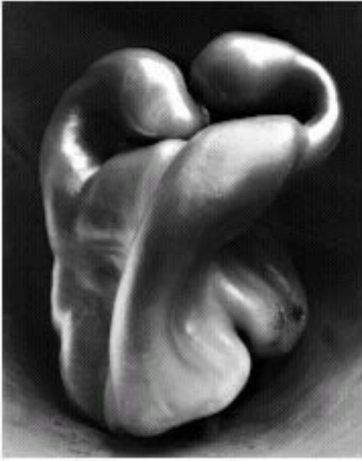
Edward Weston (1886- 1958 )

### **In-class Shooting Assignment** (this is NOT homework)

Using basic studio lights or daylight and a reflector (and a tripod), shoot a still life of a recognizable object. Using light, shadow and cropping transform it into something unique. Shoot in black and white or convert to black and white. Best 2-3 frames.

## Visual Analysis

Draw in the prominent geometric structures in the photos below.



Select one and describe why it is a famous photograph. How does this image represent the overall style and subject matter of the photographer?

## Photographer of the Week

Download the reading at <http://classes.ninabellisio.com/GD1125.php> and answer the following questions.

Place of Birth:

Primary Location:

Category: Color

Summary of the reading:



William Eggleston (1939- )

### **In-class Shooting Assignment** (this is NOT homework)

Color changes a photograph in different ways. Look for color patterns, palettes or spot colors within the environment. Your compositions can include objects, people or buildings, but cannot be arranged or posed. Shoot in color. Best 2-3 frames.

## Visual Analysis

Draw in the prominent geometric structures in the photos below.



Select one and describe why it is a famous photograph. How does this image represent the overall style and subject matter of the photographer?

## Photographer of the Week

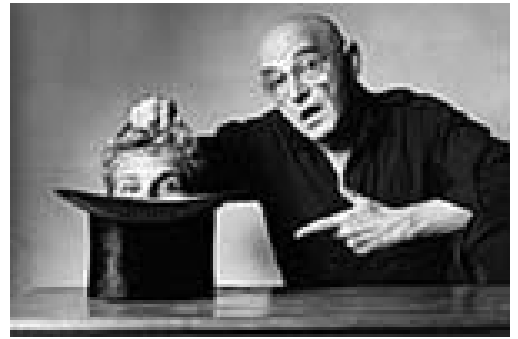
Download the reading at <http://classes.ninabellisio.com/GD1125.php> and answer the following questions.

Place of Birth:

Primary Location:

Category: Narrative Series

Summary of the reading:



Duane Michals (1932- )

### **In-class Shooting Assignment** (this is NOT homework)

Create a series of photos that tell a story, either realistic or surreal. Before shooting, briefly storyboard or discuss what each frame should look like. Use props and actors where appropriate. Shoot in black and white. Series of 4-6 frames, presented in sequence.

## Visual Analysis

Draw in the prominent geometric structures in the photos below.



The Dream of Flowers



Photographs © Duane Michals

Select one of Michals' series and describe why it is a famous group of photographs. How does this image represent the overall style and subject matter of the photographer?